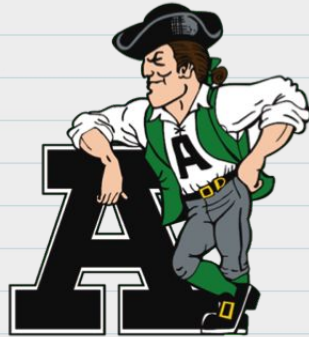


# Welcome to the building!

Hybrid  
Learning



# VIRTUAL MEETING NORMS

During our presentation this evening, we ask that you:

- Please mute your microphone
- Use the Q & A feature to submit your questions
- Be attentive and interact without distracting
- Be courteous and respectful

# AGENDA THIS EVENING



01

What To Expect?

What will this experience be like?

02

AHS Protocols

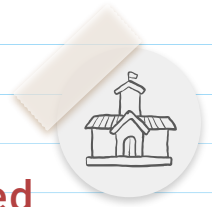
Safety First!  
What has been done at AHS?

03

Student Expectations

What is expected during the in-person school day?

# AGENDA THIS EVENING



04

What To Bring?

What do you need during the day?

05

A Day in the Life

Let's go through a typical day...

06

First Day!

What will your first day look like?

07

Q & A

What questions do you have?

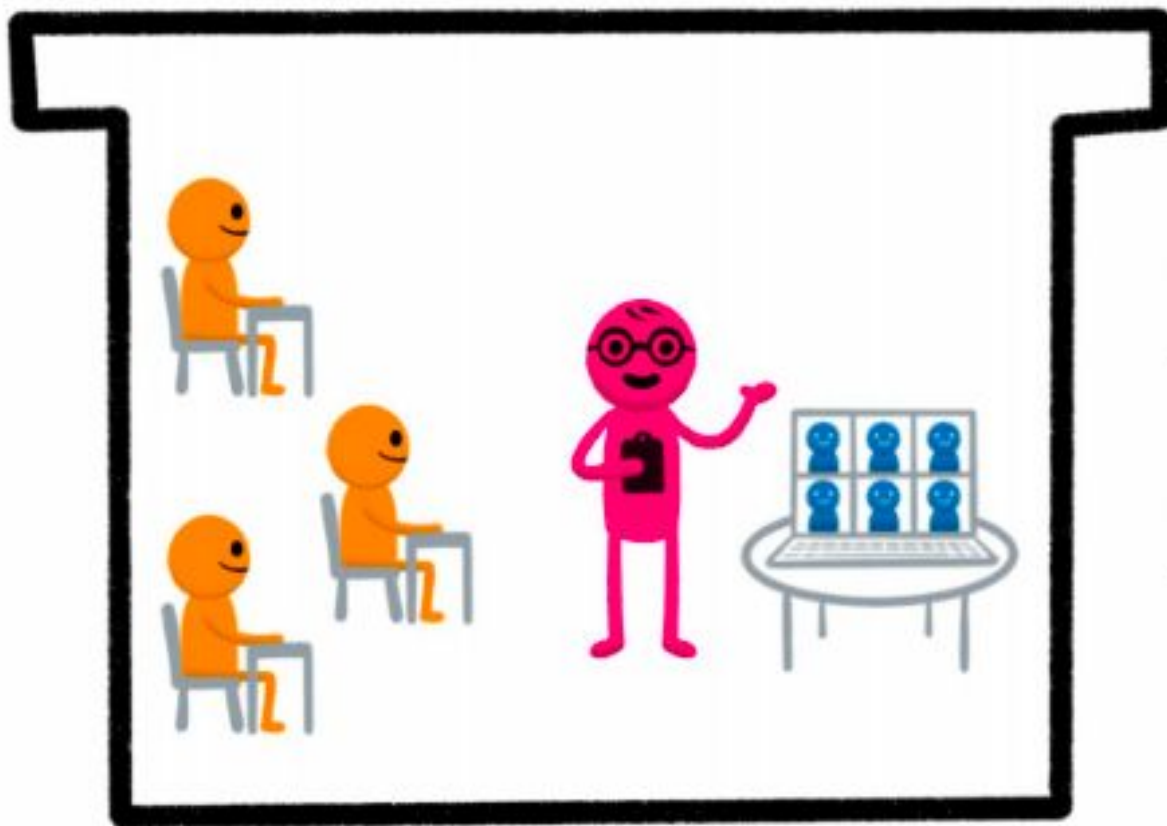


01

# WHAT TO EXPECT

What will this experience  
be like?

What does that look like??    Something Like This . . .



# Student Group Schedules

	Monday	Tuesday	Wednesday	Thursday	Friday
In School Building	Groups <b>A</b> & <b>E</b> in school	Groups <b>A</b> & <b>E</b> in school	Group <b>E</b> in school 2 ½ hours in the morning	Groups <b>B</b> & <b>E</b> in school	Groups <b>B</b> & <b>E</b> in school
Virtual (Google Meet)	Groups <b>B</b> & <b>V</b> virtual	Groups <b>B</b> & <b>V</b> virtual	Groups <b>A, B</b> & <b>V</b> Asynchronous Assignments  (No Google Meet)	Groups <b>A</b> & <b>V</b> virtual	Groups <b>A</b> & <b>V</b> virtual



02

# AHS PROTOCOLS

What have we done to  
prepare for your safety?

# BUILDING PREPARATIONS

One way arrows and signs throughout the building

Limit of 2 students. QR codes for touchless passes

**Hallways**

**Bathrooms**

**SAFETY**

**Classrooms**

Capacities and setup reflect Covid standards

**Cafeteria**

Individual student desks and chairs, socially distant

**PPE**

Masks required and provided for all. Sanitizer available

# A Typical Classroom

**MAXIMUM  
CAPACITY**  
DURING RESTRICTION  
**12**  
**People Permitted**



Per the CDC

## Water Fountain Usage is Discouraged

- If in use, only one fountain may be used at a time
- Maintain social distance



**ONLY 2 OCCUPANTS  
ALLOWED IN THIS  
BATHROOM AT A TIME**

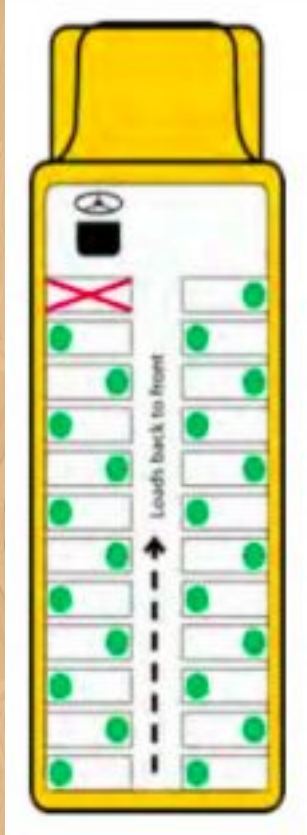
Please maintain social distancing  
and wash your hands.



# Hallways



# Transportation



- 1 child per seat
- Students enter and sit in their assigned seat
- Windows will be open for air circulation. Dress accordingly!
- Students must wear masks

Go to  
[AHS.hcpss.org](https://AHS.hcpss.org)  
Scroll to bottom  
**School & Bus Locator**

# When should you stay home?



- New onset cough or shortness of breath
- Fever over 100.4 or chills within the past 24 hours (without medication)
- New loss of taste or smell
- Fatigue
- Muscle or body aches
- Headache
- Sore throat
- Congestion or runny nose
- Nausea or vomiting
- Diarrhea



03

# STUDENT EXPECTATIONS

What will this experience  
be like?

# WHAT ARE OUR EXPECTATIONS?

- |    |                                   |                               |
|----|-----------------------------------|-------------------------------|
| 01 | <b>Masks</b>                      | <b>Just Do It!</b>            |
| 02 | <b>Social<br/>Distancing</b>      | <b>Remember 6</b>             |
| 03 | <b>Wash Hands</b>                 | <b>Happy Birthday</b>         |
| 04 | <b>Follow Signs</b>               | <b>Stay on the right side</b> |
| 05 | <b>Do Not Share<br/>Materials</b> | <b>Sharing is not good.</b>   |
| 06 | <b>Respect Others</b>             | <b>Do unto others</b>         |

1



Correct  
Mask  
Use



# Stop the Spread of Germs



Do not enter if you are sick.



Wash your hands frequently.



You must wear a cloth face covering over your nose and mouth.



Do not touch your eyes, nose, or mouth.



Maintain social distancing of at least 6 feet.



Cover your cough or sneeze with a tissue, then throw the tissue in the trash and wash your hands.



04

## WHAT TO BRING

What will you need every  
day?

# What you need to bring EVERY day

1. Chromebook or Laptop (Make sure it's fully charged!)



2. Mask



3. School Supplies (notebook, pens, etc.)



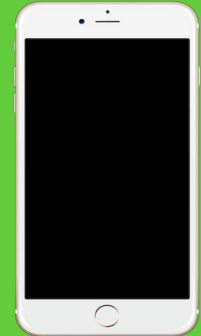
4. Charger for your Chromebook/Computer



5. Headphones



6. Phone (QR Code)





05

## A TYPICAL DAY

What will a normal day  
look like?

# AHS Student Day...

01

02

03

04

## Arrival

- Bus / Car Drop-Off
- Enter Building
- Breakfast or Directly to Period 1
- Pull up your schedule via your phone (hcpss.me, click Synergy > Class Schedule)

## Lunch

- During Period 3
- Social Distancing in line
- Sit at desk
- Mask removed to eat
- Meals are “grab and go”
- Must remain in cafeteria during lunch shift
- No microwave use for lunches
- 4 lunch shifts (A,B,C,D)
- No use of GrubHub, UberEats, etc....

## Dismissal

- Head directly to assigned bus / car pick-up
- Exit building
- Students are not permitted in the building after dismissal; they must wait outside for their ride



## ATHOLTON HIGH SCHOOL

### LUNCH SHIFTS



**A) ARL (periods 3/4), B-hall, E171, E172, F178, F179, F180**

**B) A-hall, SpEd (D157, F186, F188, F189)**

**C) C-hall**

**D) D-hall, JROTC, Gym, G-hall, F182**

# Understanding the Lunch Schedule

<b>A lunch</b>	<b>B lunch</b>	<b>C lunch</b>	<b>D lunch</b>
<b>10:40-11:10</b>	<b>11:16-11:46</b>	<b>11:53-12:23</b>	<b>12:30-1:00</b>
<b>B hallway E171 E172 F178 F179 F180</b>	<b>A hallway D157 F186 F188 F189</b>	<b>C hallway</b>	<b>D hallway JROTC Gym G hallway F182</b>

When students are not in lunch, they are in their  
**Period 3 location.**

A graphic of a spiral-bound notebook with a white page and a red cover. The spiral binding is at the top. On the left side, there are two horizontal tabs, one yellow and one pink. The page contains the number '06' in a green speech bubble, followed by the text 'FIRST DAY!' and the dates for two groups.

06

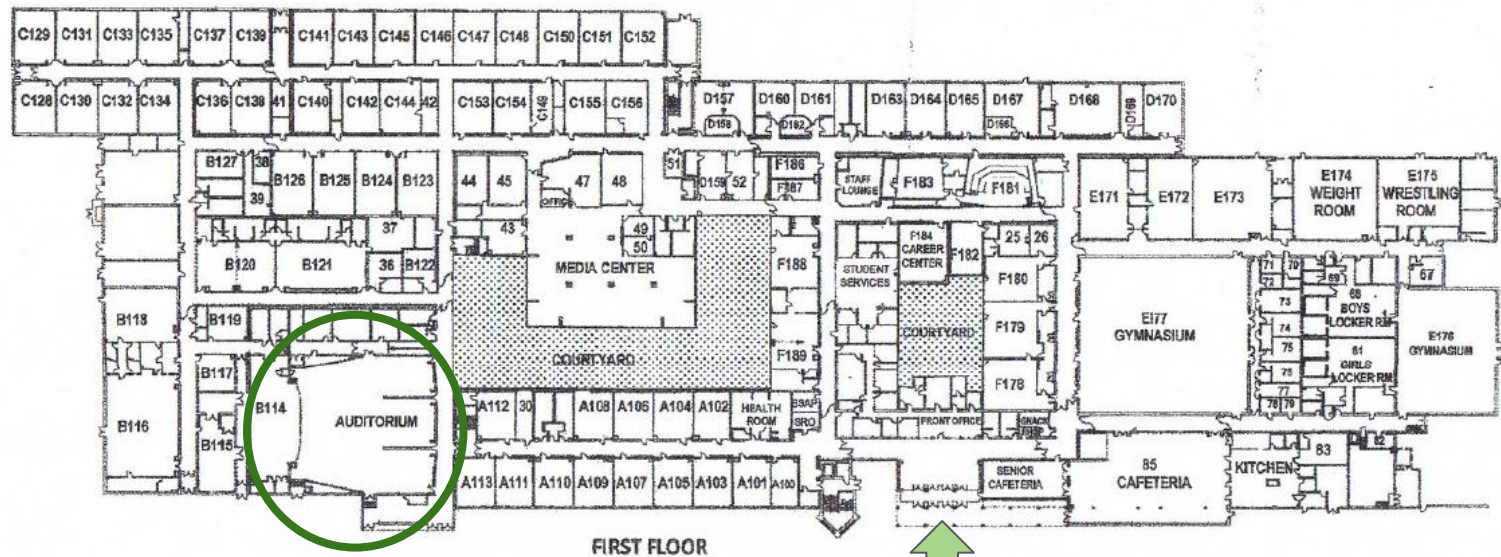
# **FIRST DAY!**

**A Group - March 29**

**B Group - April 1**

# Before your first day - AHS MAP

- Review class schedule in Synergy
  - **Hcpss.me -> Synergy -> Class Schedule -> Room numbers**  
Hallways by letter A-G  
1 = first floor  
2 = second floor (G hallway)
- Review a map of AHS
  - Highlight auditorium + 4 classroom locations + cafeteria

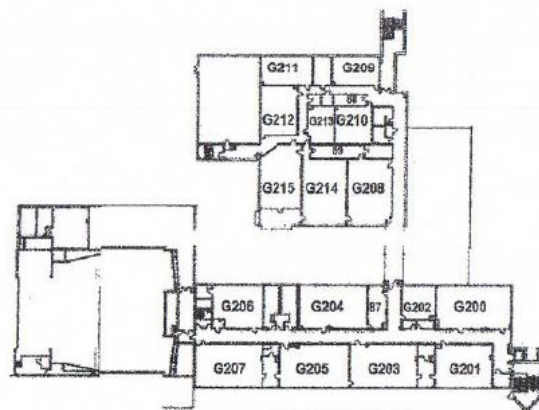


FIRST FLOOR



Main entrance

# **ATHOLTON HIGH SCHOOL CLASSROOM MAP**



# First Day - Period 1


- **Grade 9 Orientation - 7:45 AM**
  - Report to auditorium
- **“Slow Release” Open House**
  - Students released to practice/walk schedule
  - Social distancing in hallways **required**
  - 8 minutes
  - Last names A-K - 8:50 AM
  - Last names J-Z - 9:00 AM



07

## Q&A

What questions do you  
have for us?

A graphic of a spiral-bound notebook with ten rings at the top. The notebook has a white page with a red border, set against a green background with a subtle pattern.

For additional information,  
please visit the following links:

- HCPSS Frequently Asked Questions -  
<https://help.hcpss.org/>
- HCPSS COVID-19 Dashboard -  
<https://covid.hcpss.org/>
- Bridge to Normalized Instruction Plan -  
<https://www.hcpss.org/2020-2021/hybrid-mode>  
[I/](#)